



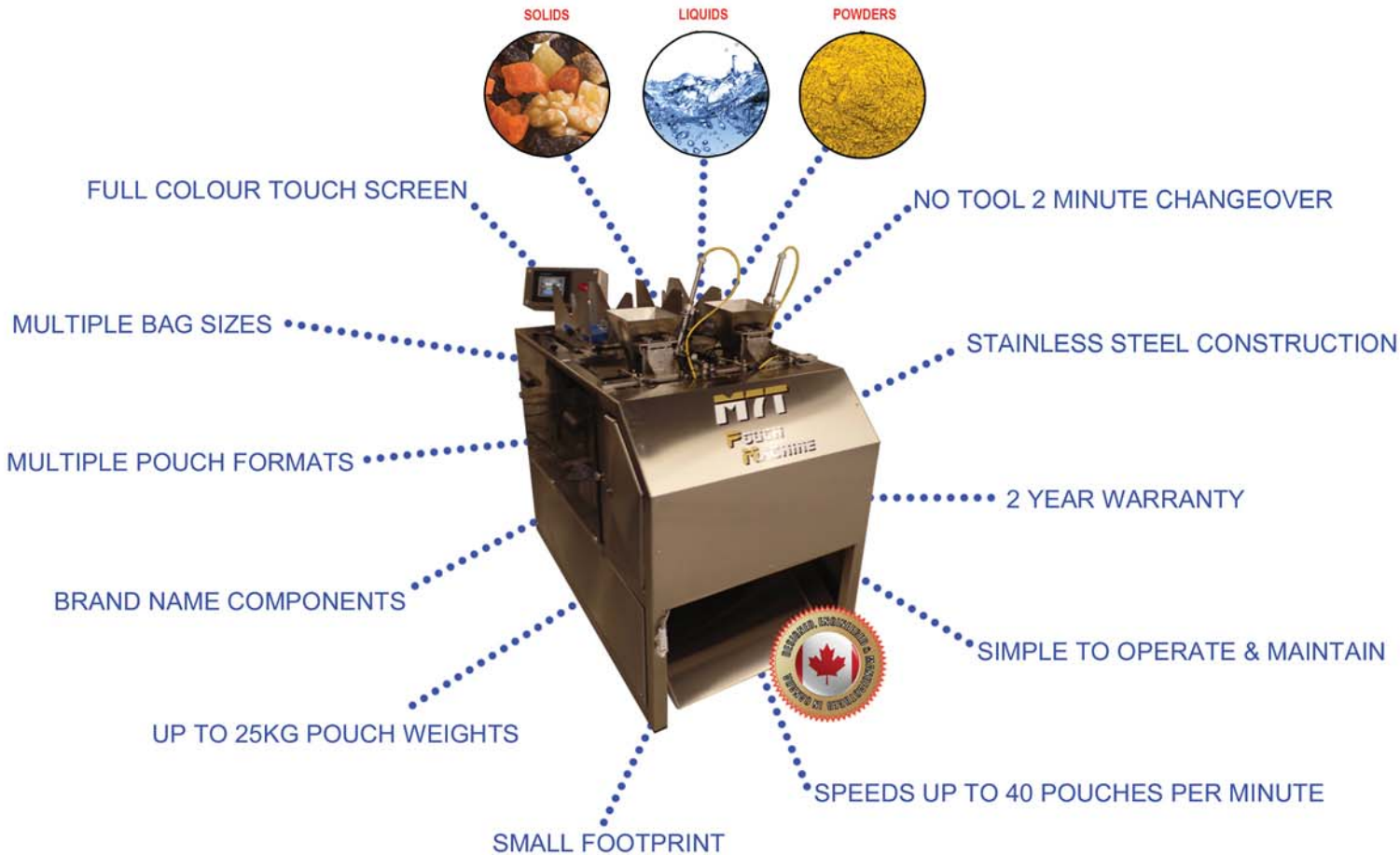
THE ORIGINAL M7 POUCH MACHINES



Our line of M7 pouch machines allows you to move away from costly, labor-intensive manual packing to a world of affordable high-speed automation. Capable of interfacing with a multitude of fillers and designed to be simple to use with a small footprint and the ability to run your existing pouches/Doy Packs.

By following our core principles • The use of premier brands and materials • Provide High Quality Workmanship • Design Machinery that is Simple to operate and maintain • Expect that no order is the same and every customer has different needs. • All these come together to give you a system that will last for years with little maintenance, and thousands of hours of reliable UPTIME.

- ▶ UP TO 40 BAGS PER MINUTE IN ONLY 2 SQ METERS
- ▶ WEIGHTS UP TO 25KG
- ▶ SAVINGS OF UP TO 4,000 MAN HOURS PER YEAR
- ▶ PROVEN DESIGN
- ▶ 100's OF SUCCESSFUL INSTALLS AROUND THE WORLD
- ▶ LOW CAPITAL COST
- ▶ MAXIMUM UPTIME
- ▶ FAST PAYBACK
- ▶ 12 YEAR OLD MACHINES STILL IN OPERATION
- ▶ IDEAL FOR SMALL TO LARGE RUNS



ADVANTAGES OVER THE COMPETITION

- ▶ LOW CAPITAL COST
- ▶ CAPITAL COST Vs BAGS PER MINUTE OUTPUT
- ▶ 2 MINUTE CHANGE OVER
- ▶ SIMPLE TO MAINTAIN
- ▶ SIMPLE TO OPERATE
- ▶ LARGE BAG SIZE RANGE
- ▶ MULTIPLE FORMATS
- ▶ LOW SCRAP
- ▶ SMALL FOOTPRINT
- ▶ EASILY MOVED
- ▶ LOAD BAGS WHILE RUNNING



SUCCESSFUL INDUSTRY INSTALLS



SOLIDS

- Frozen Foods
- Pet Food / Treats
- Fruit
- Vegetables
- Coffee & Tea
- Cookies/ Biscuits
- Nuts
- Cereal
- Cheese
- Fasteners
- Seeds
- Potting Soil
- Snacks
- Candy / Sweets
- Seafood
- Pasta
- Fertilizer
- Poultry



LIQUIDS

- Alcoholic Beverages
- Soups
- Stews
- Pastes
- Piping Bags
- Chemicals



POWDERS

- Protein Powders
- Sugar
- Flour
- Chemicals
- Sweeteners
- Detergent
- Acid
- Pancake Mix
- Spices

Options - Standard



Emboss Top Seal Side Seal



Thermal Embossing in the seal area or the side seal Available in 3,4,5 and 6mm sizes with up to 20 digits



Printer Drive



Moves Print Head across bottom of magazine - Can interface with most ink jet manufacturers



HEAVY BAG ASSIST



Supports heavy bag filling of products weighing more than 2kg also provides settling if required.



GAS FLUSH



Used to take oxygen levels in the pouch down to .5% - 10% based on product & setup



WASH DOWN



2 types Low - Allows Low pressure wash no chemicals. High-Allows High pressure wash with chemicals



WEIGH IN POUCH



Bag Opening Mechanism mounted on oil dampened load cells for high accuracy.



SIDE GUSSET



Allows the M7 to package Side Gusset and Quad Seal pouches.



ZIPPER OPENER



External Unit that opens Zippers that come closed from the manufacturer.



IMPULSE



Offers an alternative sealing for materials used for liquids and retort.



VACUUM



Removes excess air from pouch. Soft Vacuum - Note will not remove ALL air from pouch.



PRODUCT SETTLER



Bounces the full pouch after filling to lower product below the jaw area for sealing.



SPOUT POUCH



Allows various types of spout pouches to be run on the M7.

Options Custom



CONVEYOR



Transfers full bags from the pouch machine to pack off area. Available in Inclined or straight



ACC-TABLE



Receives full pouches from conveyor - Allows for Accumulation of pouches before packaging



SCOOP INSERTER



Custom designed to suit specific non nesting scoops. Deposits one per pouch.



DIVERTER



Sends product to M7 Twin Heads from a single source.



PIN PUNCH



Punches Needle holes in to sealed pouch to accommodate Air deflation for case packing or palletizing.



HIGH DUST



Encapsulates pouch around filling tube to eliminate dust, includes extraction ports.



R.F.I.D



M7 with optional RFID writer produces RFID pouches.

CUSTOMIZE



Adapt your M7 with custom heights, side exits, Bespoke seal bars etc.

M7 SINGLE HEADS

M7



M7 PRO



M7L PRO



M7 LIQUID



Pouch Sizes

100 to 300 (W) x upto 450 (L)

100 to 300 (W) x upto 450 (L)

200 to 500 (W) x upto 600 (L)

100 to 300 (W) x upto 450 (L)

Pouch Weights

Up to 2 kg

Up to 2 kg - 25 kg with Heavy Bag Assist

Up to 2 kg - 25 kg with Heavy Bag Assist

Up to 2 kg - 25 kg with Heavy Bag Assist

Speed

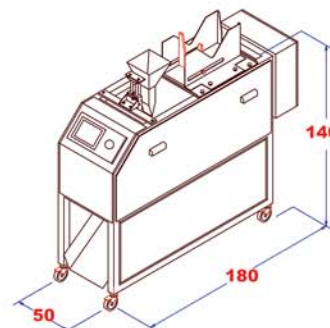
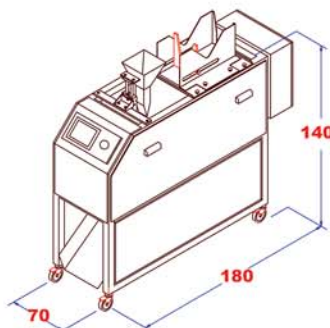
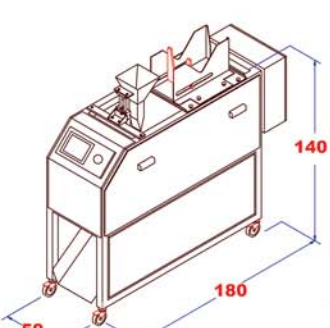
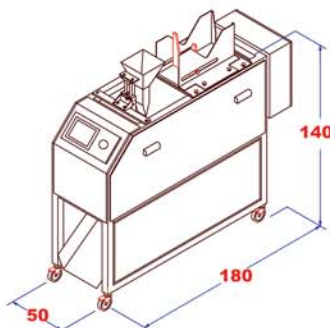
UP TO 15 BPM

UP TO 20 BPM

UP TO 15 BPM

UP TO 15 BPM

Footprint



Formats



Options



M7 TWIN HEADS

ACCESSORIES

M7T



M7T_{PRO}



M7T_{LIQUID}



Pouch Sizes

100 to 250 (W) x upto 450 (L)

100 to 300 (W) x upto 450 (L)

100 to 300 (W) x upto 450 (L)

Pouch Weights

Up to **2kg**

Up to **2kg - 25kg** with Heavy Bag Assist

Up to **2kg - 25kg** with Heavy Bag Assist

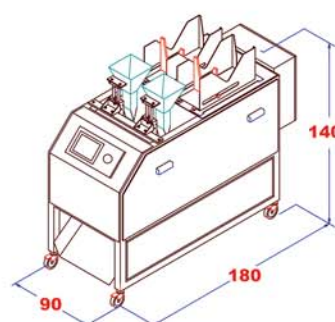
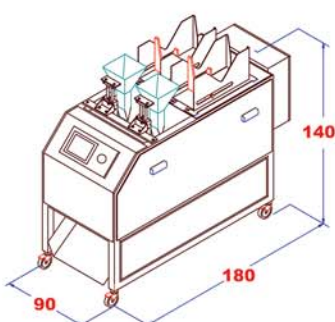
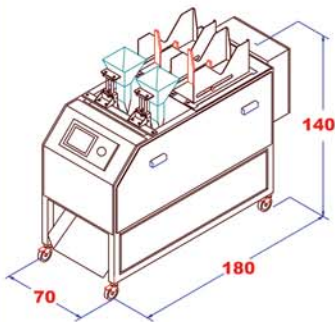
Speed

UP TO **30** BPM

UP TO **40** BPM

UP TO **30** BPM

Footprint



Formats



Options



LINEAR SCALES



MULTI-HEADS



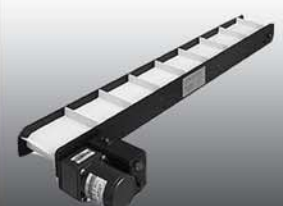
AUGERS



POUCH PRINTING / LABEL



LIQUID FILLERS



INDEXING CONVEYOR

Formats



STAND UP RESEALABLE



BOX POUCH



SLIDER CUBE



SIDE GUSSET



SPOUT POUCH



FoldLOK



STAND UP POUCH



HANDLED



3 SIDED / FLAT POUCH



SHAPED POUCHES

Solutions



PET FOOD



GAS FLUSHING



SEAFOOD



FROZEN FOOD



CHEMICAL & GARDEN



CANDY & SNACKS



COFFEE & TEA



PET STICKS & BONES



FOOD PRODUCTS



LIQUIDS



PAPER



PROTEIN POWDERS



FOIL BEVERAGE POUCHES



RFID (RADIO FREQUENCY)



SUGARS



CELLOPHANE



FRUITS & VEGETABLES



PIPING BAGS



FLOUR



PLUS
MANY
MORE
CALL FOR DETAILS

Service

Pouch Machine Corp. is committed to providing superior customer service and support with sales offices, showrooms and agents around the world

START UP

After training your operators and maintenance staff will be able to set up, change bag sizes, monitor, maintain and troubleshoot. Our service technicians will help integrate your exiting fillers and set up the full system.

OPERATION & MAINTENANCE

Easy to operate and maintain. With 12 years of experience, design changes have allowed us to lessen the routine maintenance to a basic minimum and simplify the operation of the equipment so that most of the up keep will be done with a minimal skill level.



PARTS

We use only Premier Brand name parts that are locally available. No Proprietary Parts or Part Numbers.



SERVICE CENTERS & TECHNICIANS

With Service centers and technicians around the world, they will be there should you need them.

With RMC, Full Phone and Video Support, plus our trained technicians and locally available parts = MAXIMUM UPTIME

Remote Machine Control



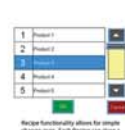
RMC (Remote Machine Control)

With our state of the art remote access computing system, capable of controlling your M7 no matter where you are in the world*. Upgrades, Monitoring and Troubleshooting are done smoothly. Add the included video conferencing between your staff and our engineers and it's like having a technician on the payroll.



PERSONALIZED WEBSITE FOR YOUR M7

Each M7 is equipped with its own QR code linked to a website personalized to your machine - It contains "How to" videos, Digital manual, Programs etc. Simply scan the QR code on the panel and you will be taken to the site.



Troubleshooting is made simple with our state of the art 3D Alarm system. Should an error occur the M7 will stall and the alarm screen will appear giving the operator the exact location of the problem. With the "Sensor Override" they can override the sensor and carry on production until maintenance has time to change it.

**Internet access required either Ethernet or Wi-Fi.*

Operation

OVERVIEW

The M7 Pouch Machine has the versatility to work with many different styles of pre-made pouches. Bags are loaded on into the cartridge and are transferred to the filling area using vacuum cups and a guided air cylinders. Sensors assure that the pouch is in position and it is properly opened. A Transition Chute is inserted to prevent product spillage and protect the seal area. After filling, the pouch is sealed and released.

POUCH LOADING

The process starts with up to 300 empty pouches being placed into the adjustable cartridge. Bags can be loaded while the machine is in operation.

Adjustable Cartridge



POUCH DETECTION

Multiple bag detection switches are used at various points in the cycle to ensure correct bag placement and full bag opening. Should a reject bag be detected it is ejected from the machine and the process continues. Rejected bags can be inspected by the operator and re-used if good.

INTEGRATION CHUTE

Doubling as a timing bucket, product enters the transition chute while the bag is being opened below. Upon pouch detection the chute enters the bag and opens its gate. Product is dispensed immediately, without spillage and protecting the seal from contamination. Difficult product that easily bridges is dispensed into the pouch directly from the filler, through the "open gate".

Posi-Hold Gripper System



FILLING

During filling, pouches are held in place with our "posi-hold" gripper system. This allows for heavy weights and shock loads without disturbing bag position. Once filled the pouch is pulled tight for sealing

SEALING

Digitally controlled, the ribbed or flat constant heat seal bars give a integral attractive seal. Pouches are sealed "in place" eliminating wrinkles, folded corners and non aligned seals. Impulse sealing is also available.



Stainless Steel Seal Bar

ADJUSTMENT

Our quick adjustment system makes work much easier and allows you to save time. It enables you to change bag sizes in a matter of minutes and to reproduce this setting whenever needed. This is the perfect solution when you have multiple pouches to run Save up to 50 Recipes on the touch screen.

Integration Chute enters bag to prevent spillage and protect seal area



POUCH OPENING

Pouches are individually removed from the cartridge with a unique combination of vacuum and pneumatic actuators. They are rotated to the fill area and opened.



Tel: +1 905 592 1233 - sales@pouchmachine.com



Tel: +1 702 922 7123 - us@pouchmachine.com



Tel: +44 (0) 1793 238 683 - uk@pouchmachine.com



Tel: +32 14 48 07 76 - europa@pouchmachine.com



www.pouchmachine.com

Pouch Machine Corp • 5109 B1 Harvester Rd • Burlington • Ontario • Canada • L7L 5Y9



[pouchmachine](https://plus.google.com/pouchmachine)



[www.youtube.com
/user/pouchmachine](http://www.youtube.com/user/pouchmachine)



[pouchmachine](https://skype.com/pouchmachine)



[www.facebook.com
/pouchmachine](http://www.facebook.com/pouchmachine)



[Pouch Machine](https://www.linkedin.com/company/pouch-machine)



[@pouchmachine](https://twitter.com/pouchmachine)