



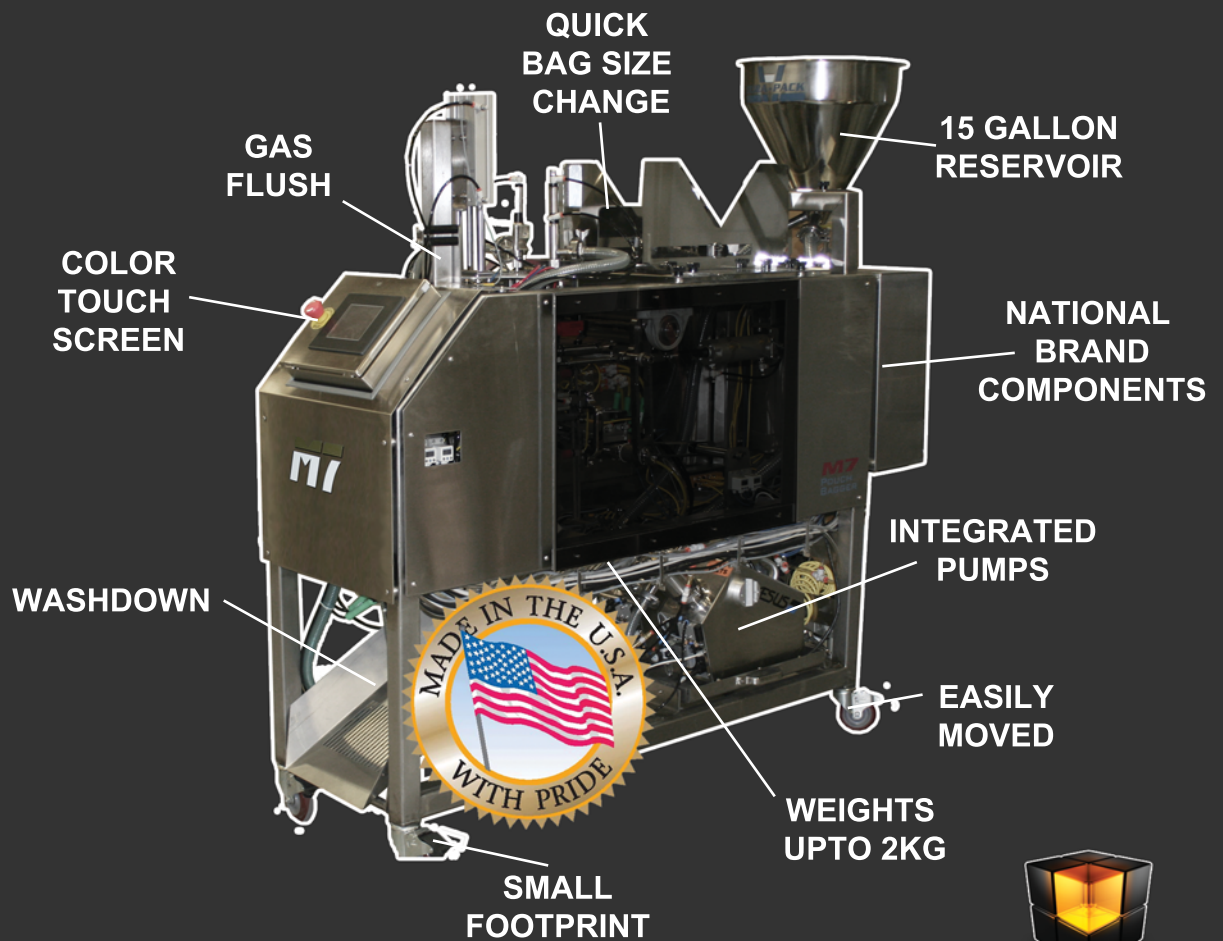
MT LIQUID POUCH MACHINE

LOW COST PACKAGING SOLUTIONS FOR YOUR LIQUIDS



PERFECT FOR

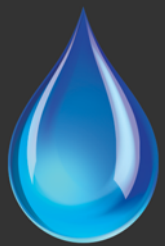
FROZEN ALCOHOL BEVERAGES • WINE COOLERS • OILS
CHEMICALS • KETCHUP • HONEY • WATER
AUTOMOTIVE • SOAPS • DETERGENTS • JUICES



www.pouchmachine.com
(877) POUCH 77



pouch
machine
corp.



M7 Liquid Pouch Machine

INCLUDES:

- Integrated Liquid fillers
- Stainless Steel Washdown
- 15 Gallon Reservoir
- PLC Controlled
- Multi Bag Recipe for easy Change-Over
- High Resolution Color Touch Screen
- 3-D System Alarms with Sensor Over-ride
- Integrated Touch Screen Temperature Control
- Weights up to 2kg.
- Automatic Bag Opening and Placing System
- Twin, Individually Controlled Sealing Jaws
- Quick Bag Size Change
- Bag In Place Detection "NO BAG NO DUMP"
- Adjustable Leveling Casters
- National Brand Pneumatics, Electronics, Bearings etc.
- 1-Year Limited Warranty



OVERVIEW

The M7 Liquid pouch machine is a packaging system that combines our M7 Pouch machine with integrated liquid pumps. This combination eliminates an additional PLC and Touch Screen to reduce cost, simplify the operation and minimize the footprint. Recipes are created that automatically configure the Pouch Machine and pumps. Data Logging, remote access and email alerts are available. All contact components are easily removed for cleaning

POUCH LOADING

The process starts with up to 400 empty pouches being placed into the adjustable cartridge. Pouches can be loaded while the machine is in operation.



POUCH OPENING

Pouches are individually removed from the cartridge with a unique combination of vacuum and pneumatic actuators. They are rotated to the fill area and opened.



POUCH DETECTION

Multiple pouch detection switches are used at various points in the cycle to ensure correct bag placement and full bag opening. Should a reject bag be detected it is ejected from the machine and the process continues. Rejected bags can be inspected by the operator and re-used.

FILLING

During filling, pouches are held in place with our "posi-hold" gripper system. This allows us to protect the seal area from contaminants during sealing.

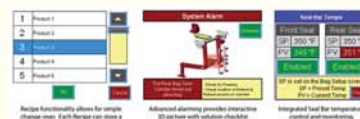
SEALING

Digitally controlled, the ribbed or flat stainless steel seal bars give a integral attractive seal. Pouches are sealed "in place" eliminating wrinkles, folded corners and non aligned seals.



MACHINE CONTROL

A High Resolution color touch screen with 3-D Alarm systems and sensor override capability makes the M7 a simple to operate - simple to troubleshoot system. Add the integrated dual temperature control and the ability to store 50 recipes and it becomes very operator friendly.



BRAND NAMES:

The use of top brand name components that are locally available will keep your "UP TIME" to a maximum.



SPECIFICATIONS:

FOOTPRINT: 20" wide X 60" long

BAG SIZE SINGLE MODE:

4" to 12" wide x up to 16" long

BAG SIZE TWIN MODE:

3" to 5" wide x up to 16" long

VOLTAGE: 120 volt 1 phase 60 hz 20 amp

AIR: 27 scfm @ 80 psi



(877) POUCH 77
www.pouchmachine.com

VISIT ONE OF THE SHOWROOMS



Pouch Machine Corp.
4305 Fairview Street, Suite 331.
Burlington, Ontario, Canada. L7L 6E8
TEL 905 592 1233
FAX 866-822-4745
sales@pouchmachine.com

Pouch Machine LLC
800 N Rainbow BL, Suite 208
Las Vegas, NV USA 89107-1193
Phone 702 932 1585
Fax 866 822 4745
sales@pouchmachine.com